

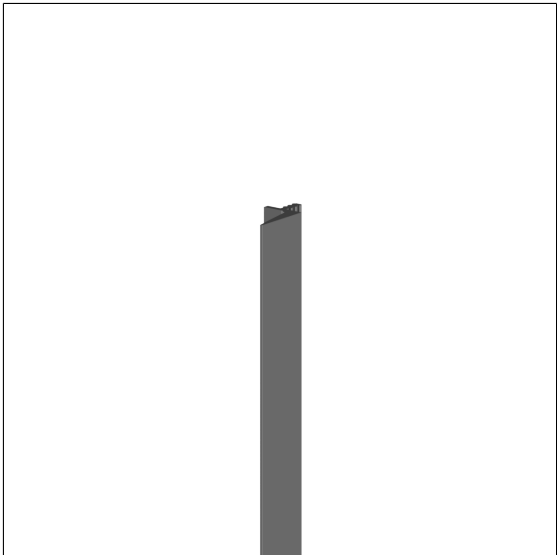


Care Solutions

Shutter and finger protection profile

Article number: 0289440016

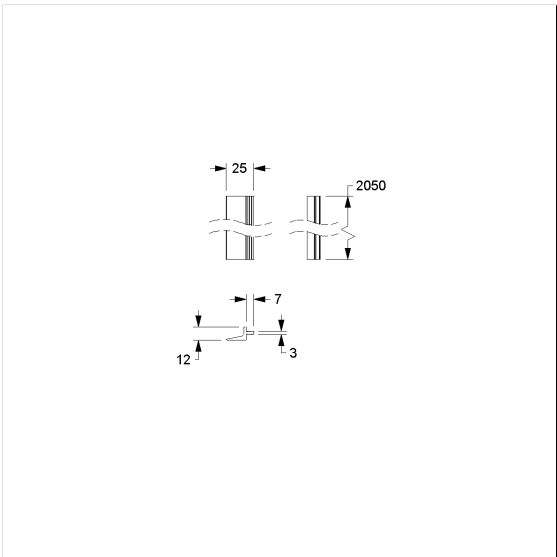
Product image



Technical specifications

| | |
|---------------|--|
| Product group | 2600 |
| Product | Shutter and finger protection profile |
| Short name | SSP 2050 |
| Length | 2050 mm |
| Width | 12 mm |
| Height | 25 mm |
| Material | Plastic |
| Colour | available in colours Black (016) and White (019) |

Technical drawing



Product description

- Design partition solutions for doors and partitions made of HPL board material
- Shutter and finger protection profile in the pivot-point area of the door prevents insight into the cabin
- are mounted on the hinge side of the door or panel
- for mounting two Shutter and finger protection profiles are needed
- can be shortened (length)
- are extruded from a hard and soft plastic in a special process, the hard area is used to fit into the face grooved panel and the soft area is used for noise damping and clamping protection, the groove requires 3 mm in width and 8 mm in depth
- self-adhesive, are hammered into the existing groove

